



TOLLARD FARMHOUSE , TOLLARD ROYAL , SALISBURY , WILTSHIRE , SP5 5QA

Unfurnished, £1,900 pcm, Available Now

Please call the Rushmore Estate Office on 01725 516225



£1,900 pcm Unfurnished



4



2



2

• Four double bedrooms • Recently renovated to a high standard • Large en suite bathroom • Large kitchen

• EPC Rating = D (60) • Council Tax = F

Description

A detached former farmhouse, cob construction with a slate roof, recently renovated. There are four upstairs bedrooms, one of which has a very large adjoining en suite bathroom. Upstairs family bathroom. Large kitchen - dining room with travertine stone floor and space for a range cooker. A dining room and large living room with wood burner in an inglenook fireplace. A downstairs office with ample sockets and fibre optic internet, and a downstairs utility with sink, and space for washer and dryer. Downstairs toilet.

Outside

Outside there is a good sized garden with beautiful views of surrounding pasture land. A former recently re-roofed stable is available for storage

Tenancy

Assured Shorthold Tenancy for a term of six months, thereafter from month to month
Deposit two month's rent

Services

Wessex fibre optic broadband available, mains water and private drainage

Viewing

To be arranged directly with the Rushmore Estate

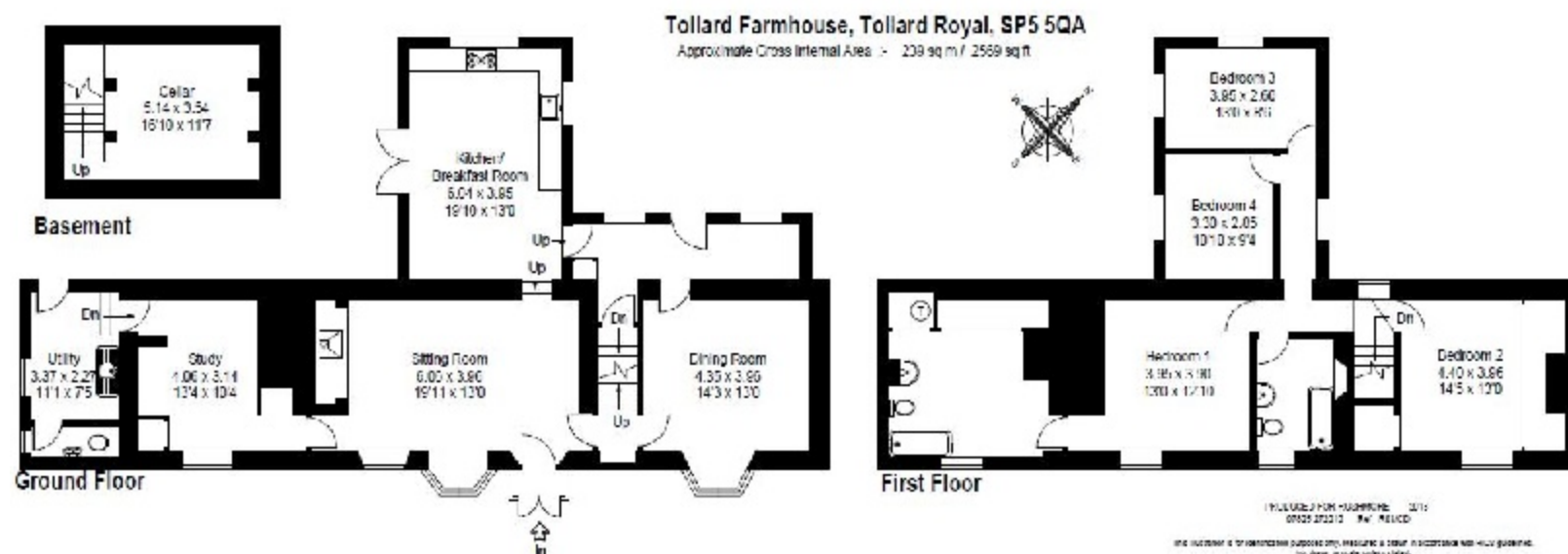


TOLLARD FARMHOUSE , TOLLARD ROYAL , SALISBURY , WILTSHIRE , SP5 5QA

Local Information

Situated outside the village of Tollard Royal in the heart of the Rushmore Estate surrounded by pasture land, about 10 minutes walk from the Larmer Tree open gardens.

Situated on B3081 to the south east of Tollard Royal. On B3081 travelling from Sixpenny Handley approximately half a mile before Tollard Royal the property is situated on the left hand side.





Savills Salisbury
Rolfes House 60 Milford Street
Salisbury Wiltshire SP1 2BP
Eric Parker
eparker@savills.com

+44 (0) 1722 426 809

savills.co.uk

Important notice: Savills, their clients and any joint agents give notice that: 1: They are not authorised to make or give any representations or warranties in relation to the property either here or elsewhere, either on their own behalf or on behalf of their client or otherwise. They assume no responsibility for any statement that may be made in these particulars. These particulars do not form part of any offer or contract and must not be relied upon as statements or representations of fact. 2: Any areas, measurements or distances are approximate. The text, photographs and plans are for guidance only and are not necessarily comprehensive. It should not be assumed that the property has all its necessary planning, building regulation or other consent and Savills have not tested any services, equipments or facilities. Tenants must satisfy themselves by inspection or otherwise.